



Real-time road weather data where and when you need it

Benefits

- Turn-key solution with integrated cellular modem and GPS for accessing all of your road weather data
- Compact design with standard automotive connectors simplifies installation
- Manage fleet and view data with Conrail[®] environmental monitoring software

Key Features

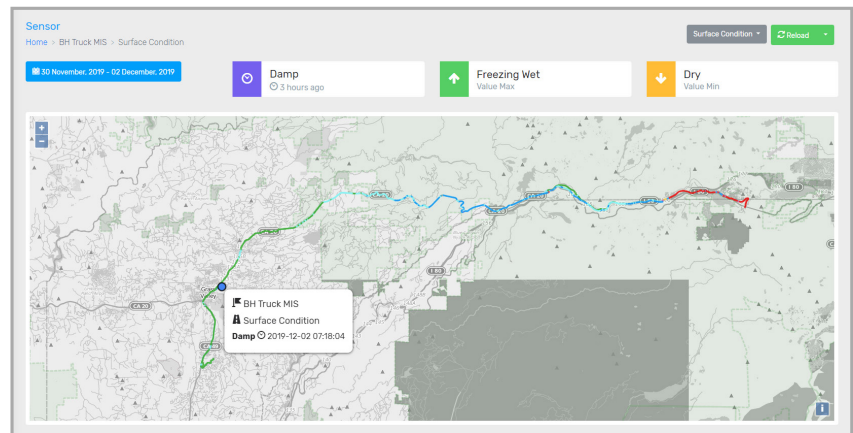
- **Return On Investment.** Reduce winter maintenance labor and material by knowing when and where road treatment is needed.
- **Road weather and vehicle data.** The StormLink MPU is compatible with HSE's line of mobile road weather sensors. Digital inputs can be used to get information about plow up or down or spreader status.
- **Expand Road Weather System.** Economically fill in the gaps between existing Road Weather Information Systems (RWIS).
- **Route Optimization.** Know the weather where your assets are in real-time to deploy resources as needed or route fleet around inclement weather.
- **Easily maintained.** The StormLink MPU checks for updates automatically, ensuring that your device is always up to date.

Description

The Model 5437 StormLink[®] Mobile Processing Unit (MPU) provides a gateway for location based, real-time mobile road weather data. The StormLink MPU collects data from the Mobile IceSight or Mobile Surface Sentinel road weather sensors providing location based data to Conrail[®] Connect environmental monitoring software via integrated cellular modem and GPS. Event based vehicle information such as plow up/down and spreader on/off can also be collected.

Smart data push rules are used to send data when you need it, limiting cellular data usage and reducing costs. Store and forward technology is used when the vehicle is not in cellular communication range ensuring data is not lost.

When coupled with Conrail Connect, real-time data is displayed on an intuitive maps interface ideal for fleet management. Each vehicle is displayed on the map with color coded trails based on the sensor data.



Conrail Connect Software Screenshot



StormLink® MPU

Specifications

Inputs	Mobile Surface Sentinel Mobile Surface Sentinel - Serial Mobile IceSight 3 Digital Input
Outputs	3 Digital Output
CPU	ARM Cortex-A5 running at 500 MHz
Communication	Cellular modem
RAM	128 MB DDR2 SDRAM, 64 Mb Serial Quad IO Flash Storage
Flash Memory	4 GB eMMC
Clock	GPS
Power Source	9 to 32 VDC
Power Consumption	<5 Watts
Antenna Connector	SMA-F
Operating Temperature	-40° to 158° F (-40° to 70° C)
Dimensions	5.3 x 4.6 x 1.3 in (31.8 x 12.7 x 8.9 cm) LxWxH no connector
Weight	0.57 lbs (0.26 kg)
Shipping Weight	3 lbs (1.4 kg)

Ordering Guide

Model 5437-00 StormLink MPU; Verizon cellular modem

Bundles:

- Model 5437-90 StormLink MPU Bundle; Mobile Surface Sentinel with display, GPS/cell antenna, power cable 10 ft., mounting bracket, cellular data plan (1 yr), Conrail Connect (1 yr)
- Model 5437-91 StormLink MPU Bundle; Mobile Surface Sentinel - Serial, power cable 10 ft., GPS/cell antenna, mounting bracket, cellular data plan (1 yr), Conrail Connect (1 yr)
- Model 5437-92 StormLink MPU Bundle; Mobile IceSight, GPS/cell antenna, power cable 10 ft., mounting bracket, cellular data plan (1 yr), Conrail Connect (1 yr)

Accessories:

- Model 5437-60 Power cable for StormLink MPU, 10 ft
- Model 5437-61 Sensor cable for StormLink MPU, 16 ft
- Model 7140-03 Antenna cellular; Omni LTE cell/GPS, bulkhead mount, 10 ft cable, SMA, black
- Model 7140-04 Antenna cellular; Omni LTE cell/GPS, adhesive mount, 10 ft cable, SMA, black

Services:

- Model 8310-21 Data Services; Verizon M2M cellular service per year
- Model 8460-00 Conrail Connect annual subscription
- Model 8460-01 Conrail Connect packaged bundle edition with pre-defined hardware bundle

Sensors:

- Model 5436-10 Mobile Surface Sentinel; surface and air temperature sensor, wireless connection from sensor to display
- Model 5436-62 Mobile Display Unit (MDU) to MPU cable; 10 ft
- Model 5436-17 Mobile Surface Sentinel – Serial with MPU connector; surface and air temperature sensor with cabled connection.
- Model 5435-02 Mobile IceSight with MPU connector; vehicle mounted non-intrusive surface condition sensor.



High Sierra Electronics, Inc.
155 Spring Hill Dr. Suite 106
Grass Valley, CA 95945

Office: +1-530-273-2080
Toll Free: 800-275-2080
Email: sales@hsierra.com

www.hsierra.com